

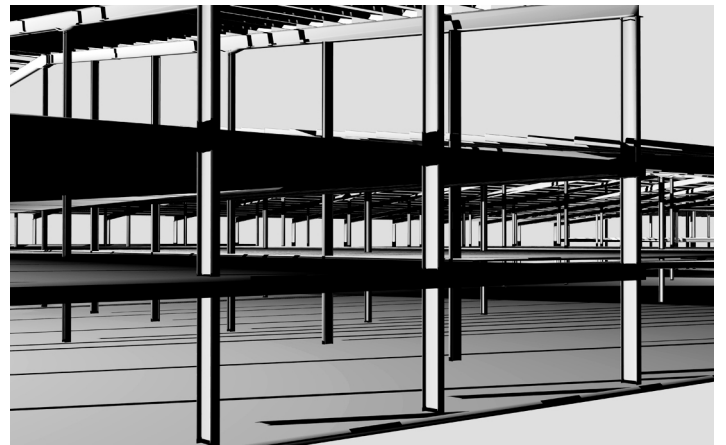
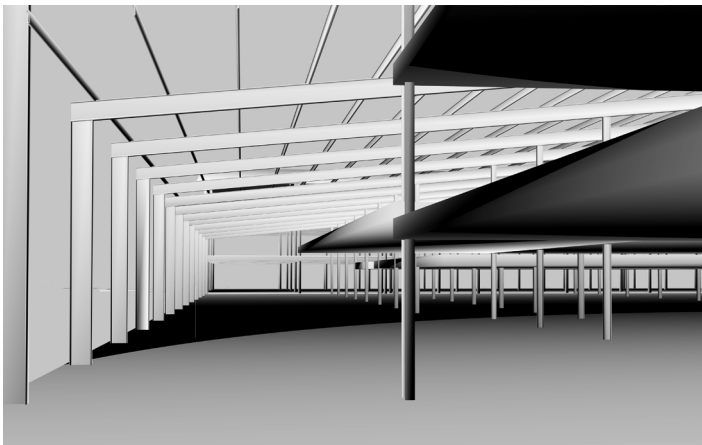
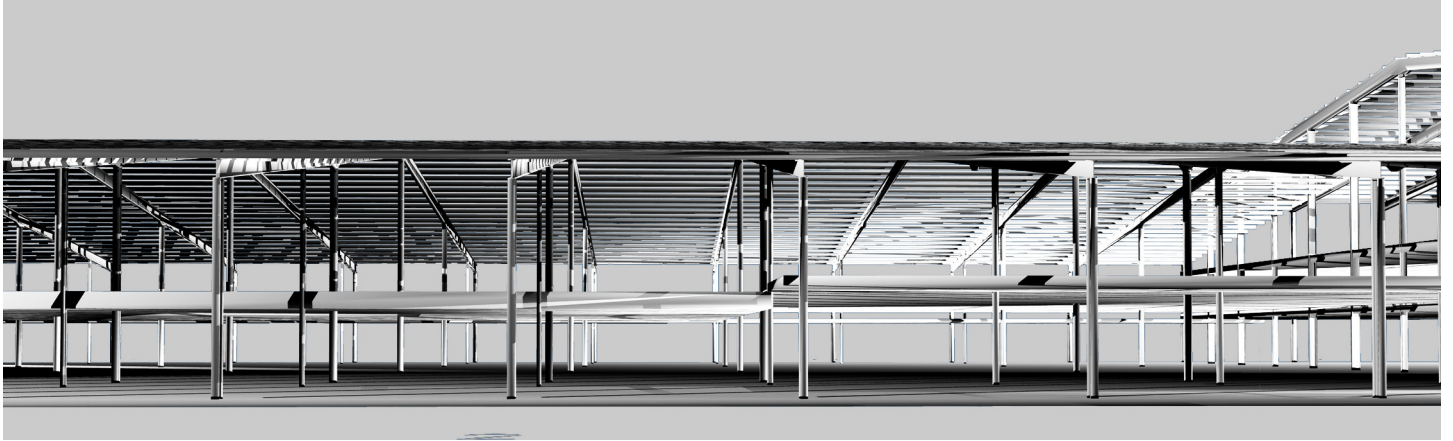
## Triumph International Swindon

This renowned manufacturer of fine ladies lingerie had outgrown its UK Headquarters in Swindon, so appointed DPDS to design and procure a 3 storey extension to its premises, and to refurbish their existing production facilities.

Having to work on a very restricted site, and within a fully operational building, DPDS identified the advantages of engaging a contractor experienced in such works, as quickly as possible. Accordingly as lead consultant DPDS Architecture managed a successful two stage tendering procedure.

With the added expertise of a Principle Contractor DPDS then co-ordinated a multi-phased programme of construction work which minimised disruption to the Triumph production line, whilst obtaining Planning and Building Regulation approvals.

# Triumph International



**Client** Triumph International

**Business Sector** Commercial / Manufacturing

**Approximate Contract Value** £12.5m

**Date of Execution** 2004 - to date

**DPDS Key** Martyn Howland

**Personnel Involved** Nigel Henham

## Key Factors

- Design of a large multi storey extension to an existing manufacturing and distribution site.
- DPDS have been commissioned for full RIBA services.
- Early liaison with contractors to ensure delivery through a two tender procedure.
- Extensive client liaison necessary to ensure scheme functionality accounting for manufacture, storage, and distribution facilities.
- Fire engineering is a key element of the design with floor zoning and compartmentation necessary accounting for mechanical handling and conveyor systems throughout the proposal.
- A Contractor has been appointed and mobilised but the project placed in abeyance pending client review of world economic situation and implications to their UK business operations.