



Patheon Swindon

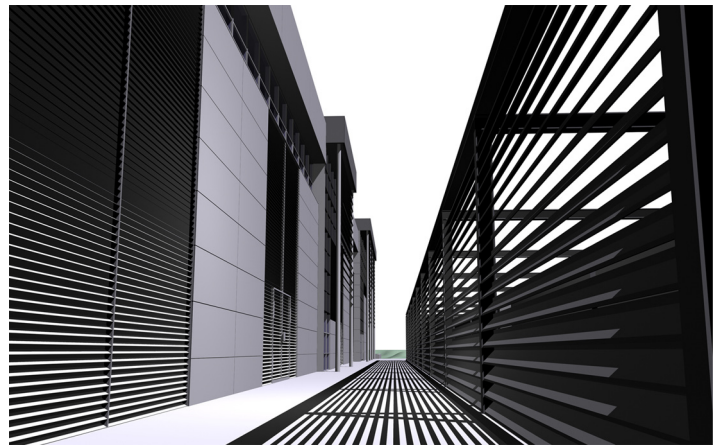
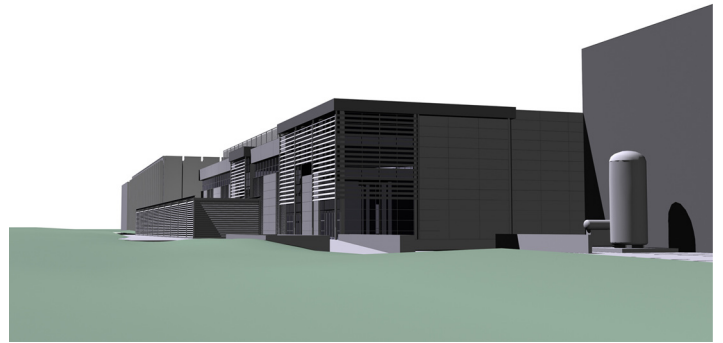
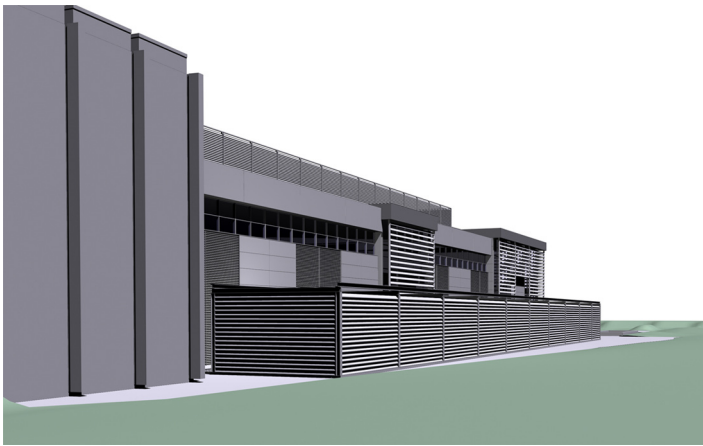
On behalf of global pharmaceutical giant Patheon, DPDS secured a major extension and expansion of their Swindon sterile supersite.

Designed by DPDS Architecture the building represents a highly contemporary solution housing a specialist drug manufacturing process.

The project required an special attention to a range of environmental concerns including flood risk, air quality, noise, landscape and ecological issues.

Classified by the UK Medicines and Healthcare products Regulatory Agency (MHRA) as a sterile supersite, Swindon's Patheon site is unique in that it is the only one licensed to produce sterile antibiotics (Cephalosporins) for sale in the world wide market.

The facility is at the forefront of pharmaceutical technology delivering a new generation of drugs demanded to counter antibiotic-resisting bacterium such as MRSA.



Client Patheon

Business Sector Pharmaceutical

Approximate Contract Value £13m

Date of Execution 2005 - 2007

DPDS Key Personnel Involved Nigel Henham

Key Factors

- A design solution had to be determined that met site constraints and sterile drug manufacturing processes of the highest level.
- Extensive servicing of the building was required and although the building was an 'extension' to an existing building it had to be designed as an environmentally stand alone facility.
- The fast track programme of construction determined that façade elements had to be removed to facilitate large pharmaceutical processing plant that was manufactured and assembled abroad which had to be delivered and inserted through the completed façade.
- The building required full environmental services (air conditioning together with both negative and positive air pressures) to different parts of the building.
- Following a Pan-European tender process Italian contractors were appointed by the client and ongoing detailed liaison on design issues, construction and quality of construction was undertaken.