

DPDS Consulting Group this year celebrates its 25th anniversary having achieved an impressive record of successful projects throughout the UK. These reflect the professionalism and dedication needed to develop proposals with an environmental awareness and the objective of commercial success.



The Wichelstowe project was just a dream when DPDS were instructed by the landowners almost 25 years ago to provide planning advice and promote the land, often referred to as "The Front Garden", for development. In July 2002, DPDS submitted an outline planning application to Swindon Borough Council for the development for 4,500 homes, employment land, retail and community uses, primary and secondary schools plus community open spaces. The application was approved in 2004 and, in spite of several High Court challenges, work got underway by 2006. Today over 250 families have moved into the first of the new homes at East Wichel and construction of the first neighbourhood shopping centre will commence shortly.

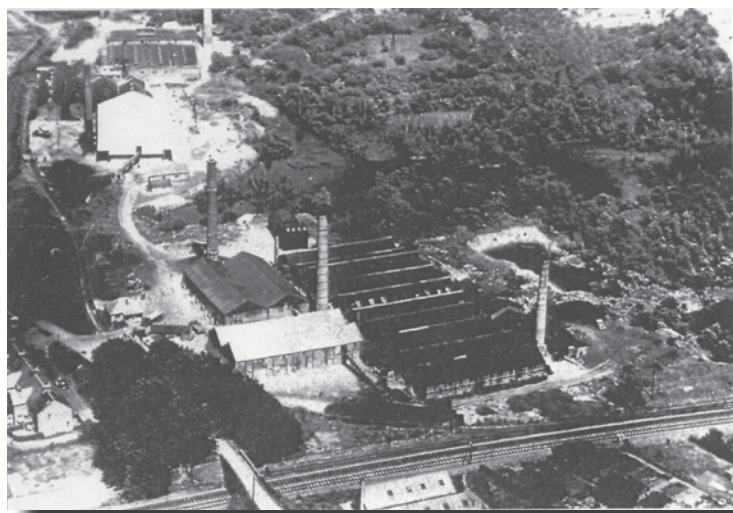


Established in 1985 by the current Chairman, Les Durrant, DPDS Consulting Group is a leading professional practice providing expert advice in the fields of Town and Country Planning, Architecture, Masterplanning and Urban Design, Environmental Impact Assessment, Landscape Architecture and Development.

With an initial staff of just four, the practice has now grown to having a multidisciplinary team of highly experienced people operating out of four offices based in Swindon, Bristol, Crawley and Derby. In 1994 the Consultancy was complimented by the opening of a full RIBA Chartered Architectural Practice incorporating masterplanning & urban design, landscape architecture and graphics teams.

The practice's client list contains many well known organisations from the mainstream property sector as well as government agencies and departments, major manufacturing companies and numerous private clients.

Looking back over the last quarter of a century, Les commented *"twenty five years of growth has been both fun and at times challenging and it is not something I could have done without the support of both my team and professional peers"*.



1

1985 Successfully represented Redland PLC at the Whitely Local Pan Inquiry in Hampshire, pursuing the redevelopment of the former Bursledon Brickworks (*picture 1*) in Fareham. The site has now been developed as a 750,000 sq ft Air Traffic Control Centre for the Civil Aviation Authority. The overall scheme provided for the restoration of a Grade 2* Listed Building and Scheduled Ancient Monument (a steam-driven Victorian brickworks) and its conversion into an industrial museum in partnership with the Hampshire Historic Buildings Preservation Trust.

1986 Conclusion of the Company's first major planning-led site acquisition on behalf of clients at what is now the Ladygrove Development Area at Didcot in Oxfordshire.

The company's first significant Metropolitan Green Belt appeal was successful for a large scale warehouse in Chiltern District.

1987 Planning permission for a large retail scheme at Broadbridge Heath (*picture 2*) was secured and DPDS was also involved in town centre redevelopment project occupied by Waitrose.

Planning permission secured for a 250,000 sq ft business park in Green Belt adjacent to Oxford Airport now developed as the Oxford Spires Business Park.



2

1988 Move to Old Bank House in Devizes Road, Old Town.

Planning Consultants for Allied Dunbar in respect of the development of a 250,000 sq ft training facility at King Edwards Place, Wanborough (*picture 3*). The successful completion of this scheme provided DPDS with a Civic Trust commendation for its involvement in the project.



3

1. Bursledon Brickworks
2. Broadbridge Heath Retail Park
3. King Edwards Place

1989 First major commission in Europe. A study was undertaken at Lyon, France to establish the feasibility of a major retail and commercial development proposal. Since then DPDS has become involved in other development projects in France.

1990 The first Regional office opened in Crawley, West Sussex.

The company's first major instruction from a European manufacturing company developing its business interests in the UK for Platre Lafarge.

DPDS diversify its business interests further into the public sector with new contracts to provide consultancy services to the Ministry of Defence, Department of Trade & Industry and a number of other public agencies and Local Authorities.

1991 A major manufacturing facility at Portbury Docks, Bristol for Platre Lafarge (*picture 4*) was completed. The 500,000 sq ft project was designed by DPDS as part of a design and build package and was completed both inside time and cost budgets.

The Company also undertook an important commission on behalf of British Rail in connection with the evaluation of some 200 potential development sites affected by the Government decision to consider a number alternative routes into London from the Channel Tunnel (*picture 5*).



4



5

1992 Further instructions from British Rail Property Board to act as their planning consultants in respect of the formal asset valuation of their entire estate as part of the privatisation process. In excess of 5,000 planning appraisals were carried out in just over a 12 week period demonstrating the value of the DPDS Development Plan Monitoring System.

1993 Major Public Inquiry on behalf of the Ministry of Defence in respect of their landholdings in the City of Portsmouth (*picture 6*).

Feasibility assessment undertaken for a major airport project in the south east.

A specialised planning service team was created in Swindon to provide expert advice to clients on minerals, waste disposal, environmental assessment, retail demographic and other specific matters.

1994 DPDS continued to be involved with a number of major leading land acquisitions throughout southern England. With an increasing architectural workload, the practice's urban design team was registered formally as an architectural practice.

The Group Company acquired the freehold interests of the headquarters office building, Old Bank House and embarked on a complete refurbishment programme.



6

- 4. Lafarge , Portbury
- 5. Channel Tunnel Link
- 6. Spinnaker Tower, Portsmouth

1995 The Corporate Property Services division upgraded the Development Plan Monitoring System and secured ongoing commitments from a major developer for a UK-wide contract and national utilities company for their extensive property portfolio.

DPDS Specialist Planning Services secured on appeal permission for a major landfill proposal on behalf of Thames Waste Management.

1996 Instructions received from Sea Containers to appraise and advise of the proposals by GNER to construct three strategic parkway stations on the East Coast Mainline.

DPDS further reinforced its regional network by opening an office in Derby.



1997 In association with AEA Technology, DPDS were appointed by the Ministry of Defence for the decommissioning of a research reactor within the Royal Naval College at Greenwich (*picture 7*).

Following the preparation of an Environmental Statement, Scheduled Ancient Monument Consent was granted 12 days from request.

1998 Submission of the planning application for the new hospital for Swindon (*pictures 8 & 9*) accompanied by an Environmental Statement which was successfully concluded with a grant of planning permission.

DPDS represented Crest Nicholson Properties at a large scale call-in Public Inquiry for a 25ha business park.



7. Royal Naval College, Greenwich

8. Artists Impression, Great Western Hospital

9. Great Western Hospital Entrance

1999 DPDS attended Examinations in Public for the Derby/Derbyshire Structure Plan and the Wiltshire Structure Plan promoting major development sites to the south of Derby and the Southern Development Area for Swindon respectively.

The South East regional office received instructions to promote major strategic development sites at Sayers Common and Broadbridge Heath in West Sussex (*picture 10*).

2000 DPDS are instructed by MEPC to secure planning permission for the redevelopment of Leavesden Aerodrome which included preparation of an Environmental Statement and sustainability audit.

2001 Construction commenced at the headquarters of Williams F1 for the new Conference and Exhibition Centre at Grove (*picture 11*) designed by DPDS Architecture.

The Centre includes a 50 seat preview theatre, a 150 seat auditorium, flexibly arranged seminar and meeting rooms as well as dining facilities.

The Centre is also home to the private Williams F1 racing car collection providing an exhibition of some 40 cars (*picture 12*). Instructions were also received to design an extension of the Formula One Team factory also located at Grove.

MEPC further instructed DPDS to obtain planning permission for Birchwood Park, Warrington.

2002 The construction of the new Conference and Exhibition Centre at Williams F1 is successfully completed.

Planning application made for Wichelstowe.



10



12



11

10. Aerial View, Broadbridge Heath

11. Williams F1 Conference Centre

12. Williams F1 Car Collection

2003 The Great Western Hospital was officially opened by HRH Duke of Edinburgh. DPDS Architecture were also responsible for the design of the 60 bed intermediate Care Unit (picture 13) adjacent to the main hospital building.

Whilst visiting Swindon HRH also officially opened New College where DPDS acted as both planners and concept architects on this project.

In December of this year Group Chairman and Managing Director Les Durrant took on the mantle of President of the Swindon Chamber of Commerce.

DPDS Architecture secured further instructions from Williams F1 to design and construct a new wind tunnel at the Formula One Team headquarters (picture 15).

2004 Joint venture company 'Incubation South East' formed by DPDS Consulting Group and Great Western Enterprise (GWE) was appointed as one of three companies by the South East England Development Agency (SEEDA) to deliver and manage facilities to support its Enterprise Hubs and Enterprise Gateways initiatives.



15



13



14

DPDS Architecture completed the official handover of the Williams F1 wind tunnel building (picture 14). Initial tests exceeded expectations and the wind tunnel was fully commissioned ahead of schedule.

Planning application granted for Wichelstowe.

The fourth regional office located in Bristol was opened.

2005 DPDS returned to New College in Swindon to deliver an annex providing much needed accommodation (picture 16).

DPDS achieves Investors in People accreditation.

Planning application is made for the Swindon Gateway development, including a site for the University of Bath.



16

- 13. Intermediate Care Unit
- 14. Williams Wind Tunnel Turbine
- 15. Williams Wind Tunnel Building
- 16. New College Annex

2006 Ropetackle, the flagship development of the Shoreham Maritime Regeneration Scheme opens (picture 17).

DPDS Architecture was appointed under a framework agreement by SEEDA/Incubation South East. The development provided some 200 new homes, an Arts and Community Centre together with an Enterprise Gateway Business Centre.

Mercaston Mill, a Grade II mill (pictures 18 & 19), was meticulously restored. The original waterwheel, at almost 7 metres in diameter – the largest in Derbyshire, has been fully returned to its former working glory and forms a stunning centrepiece to the property.

DPDS Central Region secured planning permission and Listed Building Consent through sensitive negotiations with Derbyshire Dales District Council to ensure that the proposals met with their strict conservation guidelines.

DPDS Architecture was responsible for the design and conversion of the mill and, as the photographs show, it is a project with which they are justifiably very proud of the end results.



17



18

2007 DPDS secured detailed planning permission for proposals for Patheon Pharmaceuticals, substantially expanding their Swindon supersite. The building designed by DPDS Architecture represents a highly contemporary solution housing the specialist manufacturing process.

Opened in May, 15 Cornwall (picture 20) was the second of Jamie Oliver's 15 Foundation restaurants training young, disadvantaged people from the region and helping them to build a career in catering.



19

Located at Watergate Bay near Newquay, DPDS designed and negotiated detailed planning permission with Restormel Borough Council, having won a competition for the project.



20

- 17. Ropetackle
- 18. Mercaston Mill Waterwheel
- 19. Mercaston Mill
- 20. 15 Cornwall

2008 The first planning application submitted for five 50m high turbines (hub height) at Westmill Wind Farm, Shrivenham (picture 21). The wind farm is owned by a cooperative of local people and is the first wind farm of this scale in the South East of England.

DPDS has helped Kingerlee Homes obtain planning permission at the former University Botanic Garden in Bristol (picture 22) for the conversion of the existing buildings to flats and cottages and the construction of seven large family homes in part of the grounds.

Cats Protection, the UK's leading feline welfare charity, appointed DPDS to provide planning and architectural services to support growth in the provision of adoption centres. Planning permission was secured for new adoption centres in Ferndown, Dorset with DPDS Architecture providing detailed design work. Outline planning permission has also been secured for a new adoption centre to serve the North East of England.

The refurbishment and extension of a prominent town centre office building in Crawley was completed. The works included a new entrance canopy, general enhancement of the external fabric, internal fit-out, and an additional floor of office accommodation.

2009 The first residents of the 4,500 home developments at Wichelstowe move in (picture 23).



21



22



23

2010 Oxford University asked DPDS to secure planning permission for its priceless collection in Swindon. Work to allow this to happen progressed rapidly and permission has been granted enabling the £26 million project to go ahead at the Keypoint Business Park in South Marston.

December 2010 (Digital Version)



Review

THE DPDS CONSULTING GROUP NEWSLETTER | ISSUE 45

Contact Susan Cupples with all enquiries: scupples@dpds.co.uk

<p>SWINDON Old Bank House 5 Devizes Road, Old Town Swindon, Wiltshire SN1 4BJ T: 01793 - 610222 F: 01793 - 512436 E: dpds.swindon@dpds.co.uk</p>	<p>DERBY 100 Mansfield Road Derby Derbyshire DE1 3TT T: 01332 - 206222 F: 01332 - 206012 E: dpds.central@dpds.co.uk</p>
<p>CRAWLEY 11 Kingsland Court Three Bridges Road, Crawley, West Sussex RH10 1HL T: 01293 - 616112 E: dpds.southeast@dpds.co.uk</p>	<p>BRISTOL Redmayne House 4 Whiteladies Road, Clifton Bristol BS8 1PD T: 01179 - 466882 F: 01179 - 467462 E: dpds.southwest@dpds.co.uk</p>

DPDS Review is an in-house publication.
 © DPDS Consulting Group 2010.
 All rights reserved.


INVESTOR IN PEOPLE

www.dpds.co.uk




21. Westmill Wind Farm
 22 Bracken Hill House
 23. Wichelstowe Aerial View